

中新 CHINA-SINGAPORE GUANGZHOU KNOWLEDGE CITY 广州知识城

中国和新加坡国家级双边合作标杆项目
A NATIONAL-LEVEL BILATERAL COLLABORATION PROJECT
BETWEEN CHINA AND SINGAPORE



CHINA-SINGAPORE
GUANGZHOU KNOWLEDGE CITY
中新广州知识城

中新广州知识城投资开发有限公司
广州市黄埔区中新广州知识城九龙大道腾飞园腾飞二街 11 号 (B4 栋) 邮编 510555
Sino-Singapore Guangzhou Knowledge City Investment and Development Co. Ltd.
Block B4, NO.11, Tengfei 2nd Street, Ascendas OneHub GKC, Jiulong Dadao, China-Singapore
Guangzhou Knowledge City, Huangpu District, PRC.
Guangzhou, China, 510555

 M 总机: +86 20 3211 2888
F 传真: +86 20 3211 2999
E 电邮: info@ssgkc.com
W 官网: www.ssgkc.com
微信公众号  Facebook: @GuangzhouKnowledgeCity
 Twitter: @SSGKC_

中新广州知识城新加坡办事处
Sino-Singapore Guangzhou Knowledge City Singapore Branch Office
79 Ayer Rajah Crescent #02-24, Singapore 139955
T 电话: +65 62653422 F 传真: +65 62653423

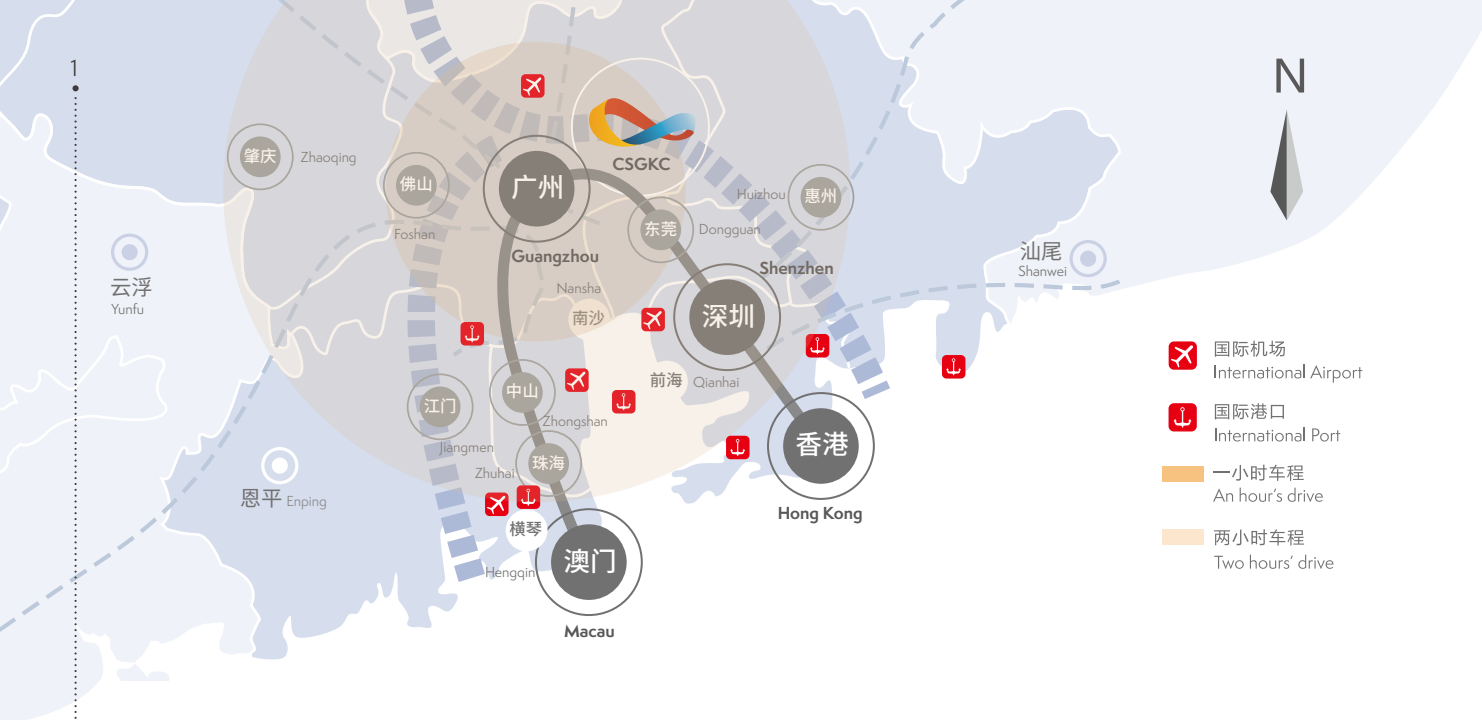
Version: 201907 C&E



中国/新加坡
CHINA / SINGAPORE



世界知识城 湾区创新源 国际人才港 幸福生态区
A WORLD CLASS KNOWLEDGE CITY, A GLOBAL TALENT MAGNET,
AN OUTSTANDING SOURCE OF INNOVATION, A HUMAN-CENTRED GREEN CITY



粤港澳大湾区湾顶“明珠”

The Brightest Pearl In The Greater Bay Area

广深港澳科技创新走廊起点和核心创新平台

Starting Point & Core Innovation Platform of the Guangzhou-Shenzhen-Hong Kong-Macao Science and Technology Innovation Corridor

广州市最具活力的经济增长引擎

The Most Energetic Growth Engine in Guangzhou

关于中新广州知识城

About China-Singapore Guangzhou Knowledge City (CSGKC)

中新广州知识城是中国与新加坡国家级双边合作项目，是广东省与新加坡合作的标志性项目，地处广州市地理几何中心，黄埔区、广州开发区的北部，规划总面积为178平方公里，规划总人口70-100万。目前，中新广州知识城正以知识经济为创新模式，汇聚高端产业与人才，打造成为一座经济、人文与生态高度和谐及可持续发展的宜居之城。2019年，知识城被纳入粤港澳大湾区战略规划，成为广深港澳科技创新走廊核心创新平台。中新广州知识城于2010年6月30日正式奠基成立，历经九年的发展已具有未来城市的雏形。

CSGKC is a state-level bilateral collaboration project between China and Singapore, also an iconic cooperation project between Guangdong Province and Singapore, which is located at the geometrical center of Guangzhou, as well as in the northern part of Huangpu District, with a total planned area of 178 square kilometers and a total planned population of around 700,000-1,000,000 people. CSGKC is positioned as a unique, vibrant and sustainable city that is highly attractive to both talents and knowledge-based industries. In 2019, as the core innovation platform of Guangzhou-Shenzhen-Hong Kong-Macao Science and Technology Innovation Corridor, CSGKC was included in the strategic planning of the GBA. Since the ground-breaking in 2010, CSGKC has developed into a prototype of a future city in nine years' time.

关于中新广州知识城投资开发有限公司（“知识城合资公司”）是广州开发区管委会与新加坡凯德集团共同投资成立的合资公司，双方股权各占50%。作为中新合作重要载体平台，知识城合资公司深度参与知识城南起步区和后续阶段开发建设，携手中新双方共同推动知识城在科技创新、城市建设、知识产权、人才交流与培训、招商引资等领域的合作，助力知识城成为中新全面深化合作的新标杆。

Sino-Singapore Guangzhou Knowledge City Investment & Development Co., Ltd (GKC Co), is a 50-50 joint-venture company established by Guangzhou Development District Administrative Committee (GDDAC) and Capitaland. GKC Co is responsible for developing the Southern Start-Up Area (SUA) as the first phase, and subsequently the rest of CSGKC in stages. With GKC Co as the platform, China and Singapore have collaborated strategically in technological innovation, city development, intellectual property rights, talent exchange and training and investment promotion, etc., making CSGKC a new benchmark for the deepening of all-round cooperation between China and Singapore.

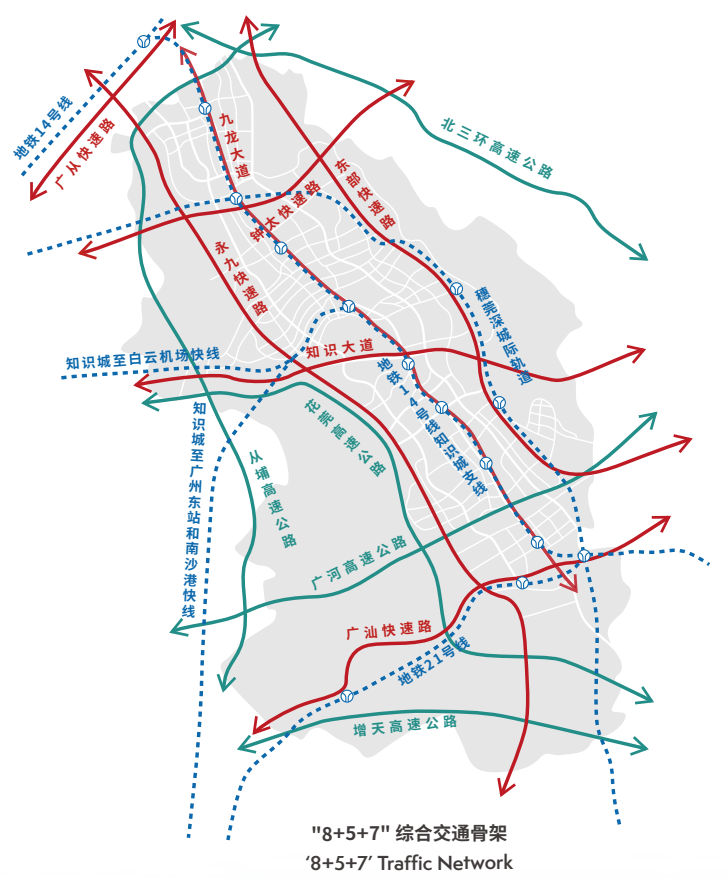
交通区位

Location & Transportation

广州市的几何中心、黄埔区北部
Geometrical center of Guangzhou, as well as in the northern part of Huangpu District

距广州中心城区 35 公里
35km from the Guangzhou City center

距广州白云国际机场 25 公里
25km from Guangzhou Baiyun International Airport



南起步区全景鸟瞰
Aerial Perspective of the CSGKC Southern SUA



产业规划

Industrial Plan

围绕广东省重点打造的七大战略性新兴产业进行科学布局

Center around Seven Strategic Emerging Pillars forged by Guangdong Province to Develop the Scientific Layout

- 新一代信息技术 New Generation ICT
- 人工智能 Artificial Intelligence
- 生物医疗 Biotech & Pharma
- 新材料 New Materials
- 新能源与节能环保 New Energy & Clean-tech
- 文化创意 Cultural & Creative
- 科教服务 Sciences & Education
- 总部经济 OHQ Economy



南、中、北三大片区 一核一带三组团

NORTH MIDDLE SOUTH Clusters
Three industry clusters + one core + one belt



公共设施

Public Amenities



学校及教育配套
Schools and Educational Facilities



邻里中心
Neighborhood Centers



家庭综合服务中心
Integrated Family Service Centers



绿色出行，风雨连廊
Pedestrian and Cycling Paths, Covered Walkways

生活及商业配套

Residential and Commercial Amenities

- 多类型住宅 Dynamic Housing Options
- 亲水生活方式 Waterfront Living
- 湖滨餐饮、休闲和商店 Riverside Al Fresco Dining, Entertainment and Retail District
- 多元化的商业配套 Various forms of Commercial Facilities
- 公寓及酒店 Service Apartments and Hotels



重点产业集群

Key Industrial Clusters

规划总面积超过 30 平方公里，聚焦 7 大战略性新兴产业，着力建设价值创新园区集群。统筹生产、生活、生态三大空间，布局疏密有度、山水城共融的城市空间

The Seven Value Parks, with a total area of over 30 km², are designed to integrate three urban spaces of production, life and ecology.



全球顶级产学研项目

The World Class Industry-University-Research Projects



国家知识产权运用和保护综合改革试验区域

The State-level Intellectual Property Rights Utilization and Protection Reform Pilot Area

占地超过 30 公顷，总建筑面积约 70 万平方米。全国唯一实现“专利、商标、版权”统一管理的园区和知识产权保护元素最集中的区域。2018 年 12 月动工建设。

With a planned area of 30 hectares and a built-up area of 700,000 square meters, it is the only zone in China that unifies the management of patents, trademarks and copyrights, with the most complete elements for IP Protection. The ground-breaking of IP Hub was in Dec 2018.



粤芯12英寸芯片项目

Guangzhou CanSemi Technology Inc.

作为广州第一座 12 寸生产线芯片厂，占地面积约 14 万平方米，可满足物联网、汽车电子、人工智能、5G 等创新应用需求，将带动半导体上下游产业链形成全新的千亿级产业集群。计划 2019 年量产。

The first 12-inch production line chip factory in Guangzhou, covering an area of about 140,000 square meters. It can meet the demand for innovative applications such as Internet of Things, automotive electronics, artificial intelligence, 5G. It will drive the semiconductor upstream and downstream industry chain to form a new billion-dollar industrial cluster. The mass production will commence in 2019.

GE 生物科技园 百济神州生产基地

GE Healthcare Campus & BeiGene Biopharmaceutical Base



基地占地 10 万平方米，以靶向和免疫抗癌药物研发为主攻目标。建设 GE 在亚洲的首个生物科技园作为创新生物药品生产基地。基地计划 2019 年试运行。

The production base covers an area of 100,000 square meters, with focus on molecularly-targeted and immuno-oncology cancer therapeutics. It is GE's first biotechnology park in Asia as an innovative biopharmaceutical production base. The test run will commence in 2019.

中新国际联合研究院

Sino-Singapore International Joint Research Institute (SSIJRI)



由华南理工大学、新加坡南洋理工大学、中新广州知识城管理委员会、中新广州知识城投资开发有限公司共同建设、汇聚融合国际优质研发资源的新型研发机构。2017 年成立，围绕六大领域开展产学研活动。

SSIJRI is a modern R&D institute, jointly set up by the South China University of Technology (SCUT), Nanyang Technological University, Singapore (NTU), CSGKC Administrative Committee and GKC Co, that gathers international high-quality R&D resources. Officially established in 2017, SSIJRI has six main research areas.



广州国际高端 医疗集聚基地

Guangzhou International Medical Cluster for Cancer Treatment

聚集国内外优势医疗医药资源，打造一流国际癌症诊疗创新基地。总占地面积 11 万平方米，由中山大学肿瘤防治中心黄圃院区、广州泰和肿瘤医院、广州皇家丽肿瘤医院构成，提供癌症诊疗高端服务。2016 年 11 月动工，2019 年试运行。

A Cooperation Platform for domestic and Foreign High-end Medical Resources and International Healthcare Services Hub for Tumor Treatment. With planned area of 110,000 square meters, comprising of Sun Yat-sen University Cancer Center Hangpu Site, Guangzhou Concord Cancer Hospital and Guangzhou Royal Cancer Hospital to provide high-end pharmaceutical and medical care. Construction started in November 2016 with trial operations commencing in 2019.

重点产业园区

Key Industrial Parks



广州知识城腾飞园 Ascendas OneHub GKC

首个进驻知识城的新加坡园区综合体，总建筑面积 47 万平方米，涵盖写字楼、住宅及商业配套等，绿化率达到了 40%。

The first Singapore Mixed Development in CSGKC with a substantial built-up area of 470,000 square meters when fully completed. High quality working space, residential and commercial amenities are contained with the green rate of 40%.



中新国际智慧产业园 China-Singapore International Smart Industrial Park

由中新广州知识城投资开发有限公司独立投资开发并运营，总建设面积约 18.33 万平方米，是知识城科技创新合作示范区和引领广州智慧科技产业生态的示范性项目。2018 年 12 月动工建设。

The industrial Park is invested and operated by Sino-Singapore Guangzhou Knowledge City Investment and Development Co., Ltd with gross floor area 183,300 sqm, gathering high-end smart industry resources of both China and Singapore to build a standard smart city showcase in Guangzhou Knowledge City. The ground-breaking of CSISIP was in Dec 2018.



广州绿地城 Guangzhou Greenland City

总建筑面积 129 万平方米，致力打造全球企业功能型总部、智慧产业研发集群、国际健康养生产业集群、高知百年社区四大业态。

Covering a planned area of 1,290,000 Square Meters; Integrated retail, commercial, business and residential cluster for operational HQ, smart R&D industries, international healthcare, stable community.

中新交流合作

China-Singapore Exchange & Collaboration

中新双方以知识城为载体，围绕智慧、生态、学习三大发展主题，形成了独具特色的中新五大交流合作平台，探索实施在国际园区建设、科技创新、知识产权、人才交流和培训、教育、品牌推广等领域，全面深化前瞻性、战略性合作，取得了卓越的成效，树立了知识城成为中新全面深化合作的标杆地位。

With CSGKC as the platform, CSGKC embodies smart, eco and learning features into its city as part of a comprehensive city development strategy and initiatives, and develops 5 key exchange and collaboration platforms over the past years. China & Singapore have collaborated strategically in international park development, technological innovation, intellectual property rights, talent exchange and training, education, brand promotion, etc., and achieved remarkable results, making CSGKC a new benchmark for the deepening of all-round cooperation between China and Singapore.



强化国际园区合作打造创业新空间
CSGKC strengthens cooperation among international parks to create a new space for entrepreneurship



2017年8月21日，新加坡国际制造创新中心揭牌
On 21 Aug 2017, SMIC was unveiled

2017年2月27日，中国国家知识产权局、新加坡知识产权局、广东省人民政府三方签署《推进知识城知识产权改革试验三方合作框架协议》
On 27 Feb 2017, SIPO, IPOS and the Government of Guangdong Province signed an Agreement to form a tripartite cooperation to facilitate the Intellectual Property pilot reform programme in CSGKC

2018年11月30日知识产权服务园在知识城启动建设
On 30 Nov 2018, the Intellectual Property Service Park commenced its construction in CSGKC

强化知识产权合作助力科技创新
CSGKC strengthens intellectual property collaboration and facilitates technological innovation

拓展软件领域合作

CSGKC Expanding the Software Collaboration



2012年至2018年底，先后组织了60余批“走出去”、“请进来”活动，累积参与培训和专题考察人员近万人次。
From 2012 to the end of 2018, more than 60 batches of Outbound & Inbound activities had been carried out, involving around 10000 participants.

社会交流互访

Social Communication and Exchange

社会管理交流
Social Management Sharing

中新青年交流
China- Singapore Youth Exchange

中新学生互访
China-Singapore Students Exchange



基于知识城平台，中新闻开展广泛的社会活动交流和教育类合作。在学习新加坡先进社会经验的同时，也帮助新加坡企业、社会组织、学校各界更加了解中国。

Extensive social exchanges and education cooperation have been carried out between China and Singapore via CSGKC's platform. While sharing Singapore's advanced social management experiences, CSGKC platforms also helps enterprises, social organizations and educational institutions from Singapore to gain a better understanding of China.

生态优先 创新导向

Ecology Priority
Innovation Oriented

借鉴新加坡先进理念 进行规划建设

Leveraging Singapore's Experience
in Urban Development

总体规划指标:

总区域面积: 178平方公里
可开发面积: 90平方公里 (9,000公顷)
总开发周期: >20年
区域总人口: 670,000
总就业人口: 270,000

土地用途 (估计):

20% - 居住用地
35% - 产业用地
45% - 行政、市政、配套、道路、绿地

CSGKC Master Plan

Total land area: 178 square kilometers
Developable area: 90 square kilometers (9,000 hectares)
Total development period: >20 years
Total population: 670,000
Job opportunities: 270,000

Land Use Plan (estimate):

20% Residential land
35% Industrial land
45% Administration, municipal, amenities, roads, green space

南起步区

Southern Start-up Area

中新合作起步区 知识城发展最成熟区域

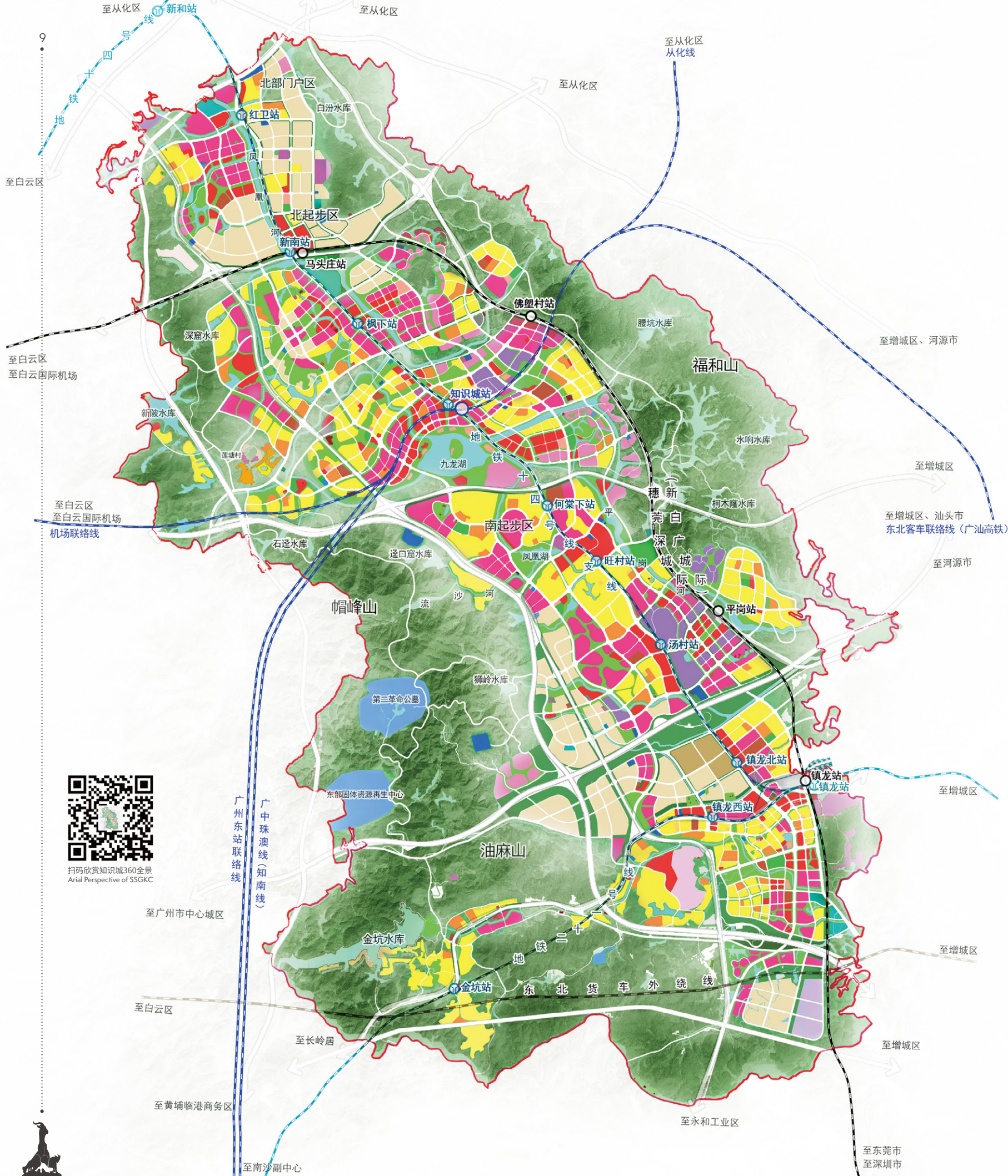
China-Singapore Collaboration SUA,
the Most Developed Area in CSGKC

规划面积: 6.27 平方公里
发展周期: 5-8年
区域人口: 78,000
就业人口: 46,000

Land area: 6.27 square kilometers
Development period: 5 ~ 8 years
Total population: 78,000
Total job opportunities: 46,000



南起步区鸟瞰
Aerial Perspective of SUA



扫码欣赏知识城360全景
Aerial Perspective of SSGKC

